

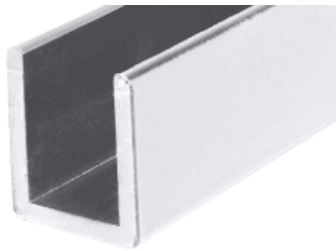


Channel or Clamps ???

When purchasing a frameless shower enclosure, this is one of the most critical questions that needs to be answered. The following information will help you make an informed decision about your own shower enclosure. Both channel and clamps are the approved methods used to install frameless shower door glass panels.

'U' Channel Installation:

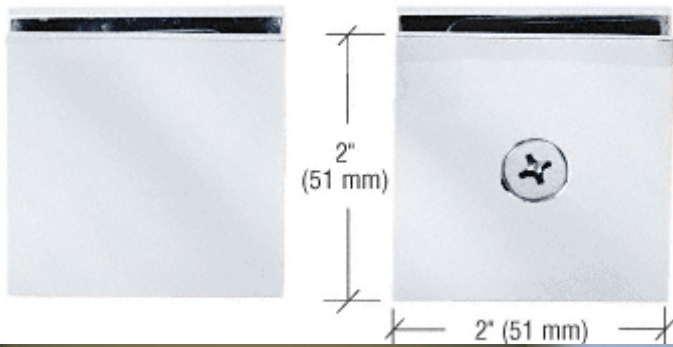
- This is the most common method for installing frameless glass panels.
- The use of channel provides for the most watertight performance from a frameless enclosure.
- Channel helps to minimize the appearance of minor imperfections in tile work.
- No notch fabrication or additional fabrication cost is required with the use of channel.





Glass Clamp Installation:

- This method of installation provides a different aesthetic look compared to channel.
- Glass clamps hold the glass away from the edge of tile about 1/8" - 3/16". These clearance gaps are potential areas where water can leak outside the shower enclosure.
- The gaps required by glass clamps do not hide tile imperfections, nor are they intended to be caulked watertight.
- Notch fabrication and additional fabrication costs are incurred with the use of clamps.



We look forward to advising you on the specific pros and cons of employing either installation method for your particular shower. Whether you decide to use channel or clamps, Solon Glass will ensure that your frameless enclosure is properly engineered, safely installed, and a beautiful focal point of your bathroom.